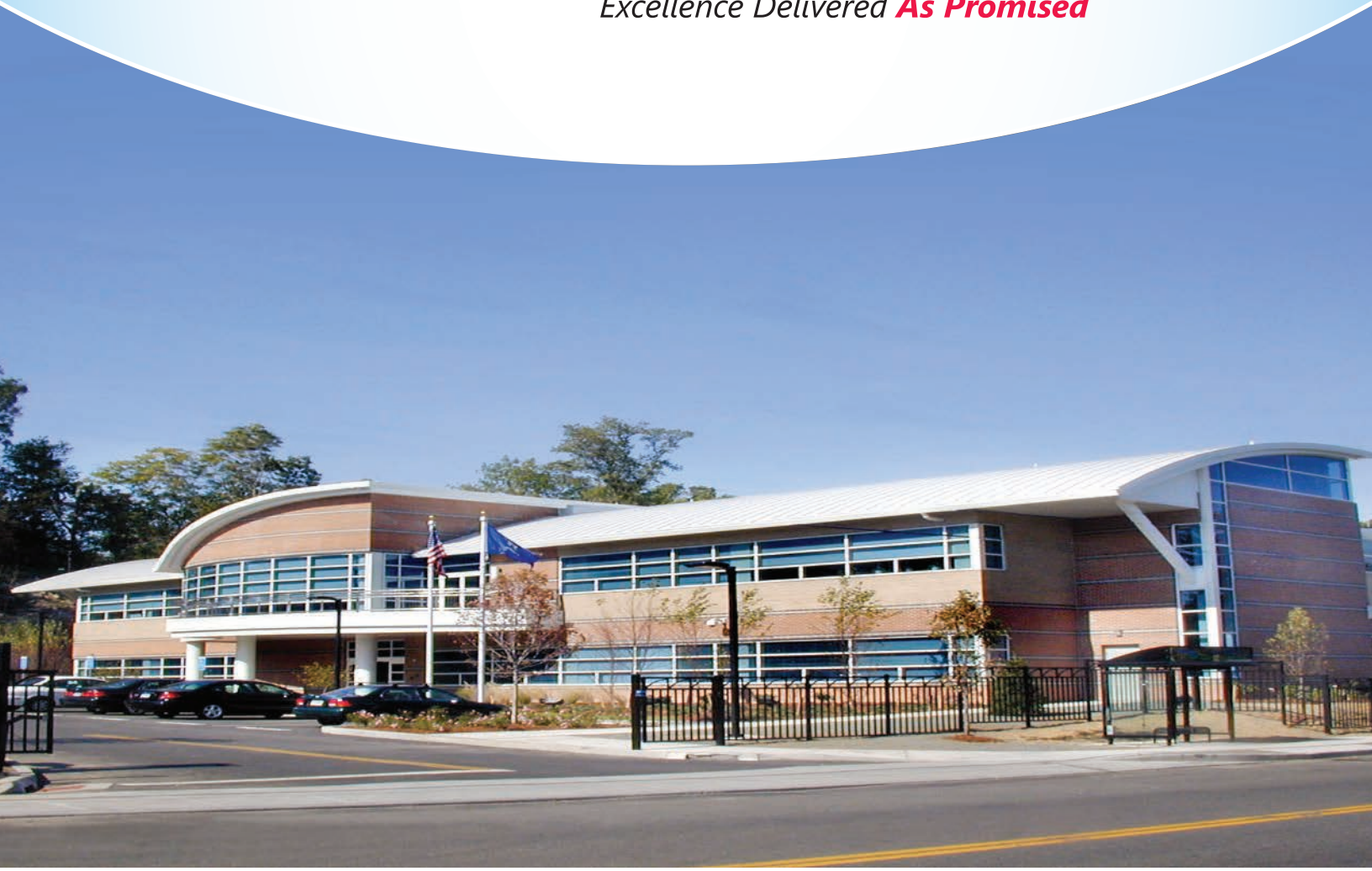




Gannett Fleming

*Excellence Delivered **As Promised***



Construction Management Services for Facilities



Gannett Fleming provided construction-phase services for the Life Sciences Building at The Pennsylvania State University in University Park, Pa.



Our clients benefit from our proven construction management process, which has been refined during nearly 100 years in the engineering and construction industry.

A Growing Demand

In today's business world, there is a growing need for construction management services for facilities of all types and sizes to integrate project requirements, client needs, regulatory requirements, legal considerations, and technological innovation. An absolute necessity is a focused, effective professional management process that will smoothly transition a project from the concept stage to completion.

The construction manager has become a vital leader in the process of developing and delivering complete projects for new or renovated facilities; providing exceptional immediate and long-term value; and protecting the interests of you, the owner. Whether for higher education, K-12 public/private schools, healthcare, commercial, industrial, institutional, or retail, the need for effective, streamlined construction management services is a must in the diverse facilities arena. Buildings and their systems are becoming increasingly complex, and regulatory and contractual requirements continue to become more cumbersome.

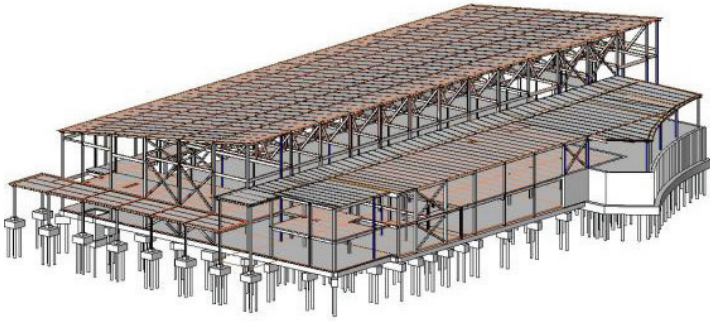
Gannett Fleming is uniquely positioned to provide a full range of construction management services for the facility owner.

A Reputation for Excellence

Serving as a trusted advisor, we effectively respond to clients' specific needs to find the best solution, regardless of project challenges. Effective construction management services result in proven cost savings and long-term value for clients. During the past decade alone, we have provided construction management services for projects totaling more than \$2 billion in total construction value.

Focused Goals

- **Control cost.** We utilize numerous proven techniques to actively control and eliminate unforeseen budget issues.
- **Deliver on time.** Proactive schedule development, frequent monitoring, and constant communication identify and mitigate potential delays.
- **Meet the requirements and deliver a quality project.** Our proven and consistent procedures to implement projects that meet our clients' expectations have evolved into Gannett Fleming becoming an ISO 9001:2008 Certified company.



Building information modeling minimizes additional costs and delays, while assuring that completed buildings function as intended.

- **Involve the regulatory community early and often.** We are thoroughly familiar with the land development and building permitting processes. We identify applicable regulatory agencies at the federal, state, and local levels, prepare necessary permit applications, and monitor the approval process until permits and approvals are received.
- **Establish a proactive public outreach program.** This allows the project team to effectively manage input from the local community and public utilities, as well as gain valuable insight into community needs.

Specialized Expertise

For both new facilities and renovation/expansion projects alike, Gannett Fleming provides quality services from preconstruction through commissioning, including risk analysis, regulatory analysis, planning, budgeting, scheduling, cost estimating, document/constructability reviews, value engineering, and coordination among all project stakeholders. In addition, our professionals manage projects from conception through design completion, as well as coordinate each of the various aspects of contract administration, bidding, construction-phase, and building turnover services.

- Conceptual planning
- Program and project management
- Selection of design professionals
- Preliminary budgeting and timeline development
- Alternative project delivery mechanisms
- Design management
- Constructability reviews and value engineering
- Construction cost estimating
- Bid packaging, solicitation, analysis, and award
- Contract preparation and administration
- Schedule development and analysis
- Project controls and Management Information Systems (MIS)
- Start-up and commissioning management
- Record documents and closeout
- Expert witness testimony
- Building Information Modeling (BIM).

Multidiscipline Support

In addition to our more than 160 construction management professionals, our firm is also comprised of more than 270 design experts that specialize in architecture, site design, geotechnical, structural, mechanical, electrical, and information technology services. Many of our staff are LEED® APs and are thoroughly familiar with innovative design techniques, such as BIM; energy audits and modeling; and utilizing sustainable energy sources in facility design. Also, our firm follows a rigorous quality assurance/quality control process for each of our projects. What this means for our construction management clients is that, for any project, we can readily tap into these valuable resources.



Gannett Fleming

*Excellence Delivered **As Promised***

Lead from the beginning...

Construction management has a broader meaning than the term implies. As construction manager, our firm is most effectively engaged when a project is in the concept stage. We guide our clients through the initial phases of making the project concept a reality and ensuring that the new facility will appropriately fit into a proposed or existing program. We have the experience, expertise, and industry tools to make the process seamless.

We establish a project program at the beginning of every project so our clients have a clear understanding of all aspects of the process. We assist in the selection of design professionals, coordinate the programming and design process, and closely monitor the approval process. During early stages of project development, we provide periodic cost estimates and value engineering to better ensure project scope meets target project costs at the beginning of construction.

...and through construction

Our project management strategy controls all aspects of the construction phase through a combination of traditional, scientific, and creative methods. Our firm monitors the details while maintaining the integrity of the schedule, budget, and project requirements, utilizing the latest industry technology. We provide project leadership and manage communication and the exchange of information with experienced on-site personnel.

800.233.1055

www.gannettfleming.com

**ISO 9001:2008
CERTIFIED**

Cover photo top:
Construction management and inspection services for
the Norwalk Bus Facility in South Norwalk, Conn.



Offices Worldwide



00298-0116